



SAILUN PASSENGER AND LIGHT TRUCK TIRE CATALOG



@SAILUNTYREHQ



@TYRESAILUN



@SAILUNTYREHQ



VALENCIA CF GLOBAL TIRE PARTNER



ATREZZO R01 SPORT



PERFORMANCE RATINGS:



ATREZZO R01 SPORT is the first choice for gearheads. This street legal sport specific tire boasts strong grip and exceptional handling for all your on and off track sporting needs. Street legal – not used for drifting.

RIM	SIZE	LI	SR	XL	SIDEWALL	TD (mm)	STANDARD RIM	SW (mm)	OD (mm)	UTQG	MAX LOAD (kg)	PRESSURE (kpa)	PLANT
15	195/50R15	82	V	-	BSW	7.1	6J	201	577	180/AA/A	475	300	CN
	195/55R15	89	V	XL	BSW	7.1	6J	201	595	180/AA/A	580	340	CN
17	215/45ZR17	91	W	XL	BSW	7.1	7J	213	626	180/AA/A	615	340	CN
	225/40ZR18	92	W	XL	BSW	7.1	8J	230	637	180/AA/A	630	340	CN
18	235/40R18	95	W	XL	BSW	7.1	8 1/2J	241	645	180/AA/A	690	340	CN
	255/50R18	106	V	XL	BSW	7.9	8J	265	713	180/AA/A	950	340	CN
	255/55R18	109	V	XL	BSW	8.2	8J	265	737	180/AA/A	1030	340	CN
	265/35R18	97	W	XL	BSW	7.9	9 1/2J	271	643	180/AA/A	730	340	CN



High-end product with unique sidewall design; employs curved incisions which fully reflects its sporty and urban look.

Widened tread and wave-like central rib design ensure greater high speed stability.

Sleek and wide shoulder grooves effectively drain water.

Big shoulder blocks improve stability and handling to meet performance needs.

Curved grooves improve abrasion resistance and the rounded corners on the tread block edges protects the tire from damage.



ULTRA HIGH PERFORMANCE SUV TIRE

ATREZZO

SVR LX+



PERFORMANCE RATINGS:



HIGH SPEED PERFORMANCE

Symmetric tread pattern design improves high-speed acceleration. Central rib pattern improves upon high-speed stability for a more comfortable drive.



WET PERFORMANCE

The groove and sipe designs running from the shoulder to the center of the tread effectively break through water film making it perfect for wet road conditions.



IMPROVED STABILITY

The three-dimensional groove design located on the tread block edges improve tread block rigidity and driving stability.



EXTENDED SERVICE LIFE

The ground contact force on the tire has been designed to distribute more evenly ensuring greater driving stability and promoting even wear.

RIM	SIZE	LI	SR	XL	SIDEWALL	TD (mm)	STANDARD RIM	SW (mm)	OD (mm)	UTQG	MAX LOAD (kg)	PRESSURE (kpa)	PLANT
	255/45R20	105	V	XL	BSW	9.5	8 1/2J	255	738	420/A/A	925	340	CB
	265/50R20	111	V	XL	BSW	9.5	8 1/2J	277	774	420/A/A	1090	340	CB
	275/40R20	106	V	XL	BSW	9.5	9 1/2J	278	728	420/A/A	950	340	CB
	275/45R20	110	V	XL	BSW	9.5	9J	273	756	420/A/A	1060	340	CB
20	275/55R20	117	V	XL	BSW	9.5	8 1/2J	284	810	420/A/A	1285	340	CB
	275/60R20	119	H	XL	BSW	9.5	8J	279	838	420/A/A	1360	340	CB
	285/50R20	116	V	XL	BSW	9.5	9J	297	794	420/A/A	1250	340	CB
	295/45R20	114	V	XL	BSW	9.5	10J	296	774	420/A/A	1180	340	CB
	305/50R20	120	V	XL	BSW	9.5	9 1/2J	316	814	420/A/A	1400	340	CB
	235/30ZR22	90	W	XL	BSW	8.2	8 1/2J	241	701	420/A/A	600	340	CB
	245/30ZR22	92	W	XL	BSW	8.2	8 1/2J	248	707	420/A/A	630	340	CB
22	265/35ZR22	102	W	XL	BSW	9.5	9 1/2J	271	745	420/A/A	850	340	CB
	265/40R22	106	V	XL	BSW	9.5	9 1/2J	271	771	420/A/A	950	340	CB
	305/40R22	114	V	XL	BSW	9.5	11J	313	803	420/A/A	1180	340	CB
	305/45R22	118	V	XL	BSW	9.5	10J	303	833	420/A/A	1320	340	CB
24	295/35R24	110	V	XL	BSW	9.5	10 1/2J	301	816	420/A/A	1060	340	CB
	305/35R24	112	V	XL	BSW	9.5	11J	313	824	420/A/A	1120	340	CB



REDUCED NOISE EMISSIONS

An optimized tread pitch arrangement significantly reduces noise emissions.

The widening groove design extending from the center to the shoulder effectively disrupts noise frequencies to reduce noise emissions.



ULTRA HIGH PERFORMANCE TIRE

ATREZZO ZSR



PERFORMANCE RATINGS:



The new generation **ATREZZO ZSR** is engineered to deliver precise wet and dry handling performance. With an asymmetrical tread design and enhanced tread rubber formula, Atrezzo ZSR rises to the challenge and provides exceptional performance on the street and on the highway.



HIGH SPEED STABILITY

The central rib pattern improves high speed stability to improve driving comfort.

CORNERING

The reinforced shoulder design improves grip for effective cornering capabilities.



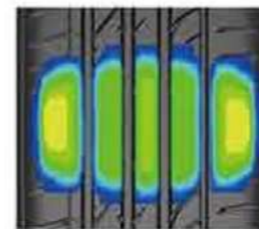
NOISE EMISSION

The various groove angles evenly distribute vibrations generated while running to reduce noise emissions. The design has been measured to reduce noise emissions by about 3%.



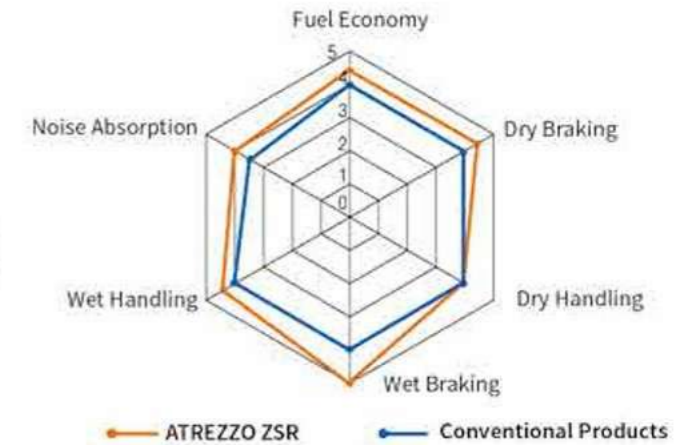
EXCELLENT DRAINAGE PERFORMANCE

Grooves with varying widths efficiently drain water to reduce hydroplaning and improve fuel efficiency.



LONGER TREAD LIFE

Through our testing, we have ensured greater driving stability and promoted uniform wear by increasing the tire's ground contact area by 6%.



ATREZZO ZSR

RIM	SIZE	LI	SR	XL	SIDEWALL	TD (mm)	STANDARD RIM	SW (mm)	OD (mm)	UTQG	MAX LOAD (kg)	PRESSURE (kpa)	MARK	PLANT
15	195/45R15	78	V	-	BSW	8.0	6 1/2J	195	557	340/A/A	425	300	-	CN
	195/50R15	82	V	-	BSW	8.0	6J	201	577	340/A/A	475	300	-	CN
16	195/40ZR16	80	W	XL	BSW	8.2	7J	200	562	340/A/A	450	340	-	CN
	195/45R16	84	V	XL	BSW	8.0	6 1/2J	195	582	340/A/A	500	340	-	CN
	195/55RF16	87	V	-	BSW	8.2	6J	201	620	340/A/A	545	300	RFT	CN
	205/45R16	87	Y	XL	BSW	8.2	7J	206	590	340/A/A	545	340	-	CN
	205/50ZR16	87	W	-	BSW	8.2	6 1/2J	214	612	340/A/A	545	300	-	CN
	205/55ZR16	91	W	-	BSW	8.3	6 1/2J	214	632	340/A/A	615	300	-	CN
	205/55ZRF16	91	W	-	BSW	8.3	6 1/2J	214	632	340/A/A	615	300	RFT	CN
	215/55ZR16	97	W	XL	BSW	8.2	7J	226	642	340/A/A	730	340	-	CN
	225/55ZR16	99	W	XL	BSW	8.2	7J	233	654	340/A/A	775	340	-	CN
	195/40R17	81	V	XL	BSW	8.2	7J	200	588	340/A/A	462	340	-	CN
205/40ZR17	84	Y	XL	BSW	8.2	7 1/2J	212	596	340/A/A	500	340	-	CN	
205/45RF17	88	W	XL	BSW	8.2	7J	206	616	340/A/A	560	340	RFT	CN	
205/45ZR17	88	Y	XL	BSW	8.2	7J	206	616	340/A/A	560	340	-	CN	
205/50ZR17	93	W	XL	BSW	8.2	6 1/2J	214	638	340/A/A	650	340	-	CN	
205/50ZRF17	89	W	-	BSW	8.2	6 1/2J	214	638	340/A/A	580	300	RFT	CN	
215/35ZR17	83	Y	XL	BSW	8.2	7 1/2J	218	582	340/A/A	487	340	-	CN	
215/40ZR17	87	Y	XL	BSW	8.0	7 1/2J	218	604	340/A/A	545	340	-	CN	
215/45ZR17	91	Y	XL	BSW	8.0	7J	213	626	340/A/A	615	340	-	CN	
17	215/50ZR17	95	W	XL	BSW	8.2	7J	226	648	340/A/A	690	340	-	CN
	215/55ZR17	98	W	XL	BSW	8.2	7J	226	668	340/A/A	750	340	-	CN
	225/45ZR17	94	Y	XL	BSW	8.2	7 1/2J	225	634	340/A/A	670	340	-	CN
	225/45ZRF17	91	Y	-	BSW	8.2	7 1/2J	225	634	340/A/A	615	300	RFT	CN
	225/50ZR17	98	Y	XL	BSW	8.2	7J	233	658	340/A/A	750	340	-	CN
	225/50ZRF17	94	W	-	BSW	8.2	7J	233	658	340/A/A	670	300	RFT	CN
	225/55ZR17	101	W	XL	BSW	8.2	7J	233	680	340/A/A	825	340	-	CN
	225/55ZRF17	97	Y	-	BSW	8.2	7J	233	680	340/A/A	730	300	RFT	CN
	235/45ZR17	97	Y	XL	BSW	8.2	8J	236	644	340/A/A	730	340	-	CN
	245/40ZR17	95	Y	XL	BSW	8.2	8 1/2J	248	628	340/A/A	690	340	-	CN
245/45ZR17	99	Y	XL	BSW	8.2	8J	243	652	340/A/A	775	340	-	CN	
18	215/35ZR18	84	Y	XL	BSW	8.0	7 1/2J	218	607	340/A/A	500	340	-	CN
	215/40R18	89	V	XL	BSW	8.0	7 1/2J	218	629	340/A/A	580	340	-	CN
	215/45ZR18	93	Y	XL	BSW	8.2	7J	213	651	340/A/A	650	340	-	CN
	225/35ZR18	87	Y	XL	BSW	8.2	8J	230	615	340/A/A	545	340	-	CN
	225/40ZR18	92	Y	XL	BSW	8.2	8J	230	637	340/A/A	630	340	-	CN
	225/40ZRF18	92	Y	XL	BSW	8.2	8J	230	637	340/A/A	630	340	RFT	CN
	225/45ZR18	95	Y	XL	BSW	8.2	7 1/2J	225	659	340/A/A	690	340	-	CN
	225/50ZR18	95	Y	-	BSW	8.2	7J	233	683	340/A/A	690	300	-	CN

RIM	SIZE	LI	SR	XL	SIDEWALL	TD (mm)	STANDARD RIM	SW (mm)	OD (mm)	UTQG	MAX LOAD (kg)	PRESSURE (kpa)	MARK	PLANT
18	235/40ZR18	95	Y	XL	BSW	8.2	8 1/2J	241	645	340/A/A	690	340	-	CN
	235/45ZR18	98	Y	XL	BSW	8.2	8J	236	669	340/A/A	750	340	-	CN
	235/50ZR18	101	Y	XL	BSW	8.2	7 1/2J	245	693	340/A/A	825	340	-	CN
	245/40ZR18	97	Y	XL	BSW	8.2	8 1/2J	248	653	340/A/A	730	340	-	CN
	245/40ZRF18	97	Y	XL	BSW	8.2	8 1/2J	248	653	340/A/A	730	340	RFT	CN
	245/45ZR18	100	Y	XL	BSW	8.2	8J	243	677	340/A/A	800	340	-	CN
	245/45ZRF18	100	W	XL	BSW	8.2	8J	243	677	340/A/A	800	340	RFT	CN
	245/50ZRF18	100	Y	-	BSW	8.2	7 1/2J	253	703	340/A/A	800	300	RFT	CN
	255/35ZR18	94	Y	XL	BSW	8.2	9J	260	635	340/A/A	670	340	-	CN
	255/35ZRF18	90	Y	-	BSW	8.2	9J	260	635	340/A/A	600	300	RFT	CN
19	255/45ZR18	103	Y	XL	BSW	8.2	8 1/2J	255	687	340/A/A	875	340	-	CN
	265/35ZR18	97	Y	XL	BSW	8.2	9 1/2J	271	643	340/A/A	730	340	-	CN
	215/35ZR19	85	Y	XL	BSW	8.2	7 1/2J	218	633	340/A/A	515	340	-	CN
	225/35ZR19	88	Y	XL	BSW	8.2	8J	230	641	340/A/A	560	340	-	CN
	235/35ZR19	91	Y	XL	BSW	8.2	8 1/2J	241	647	340/A/A	615	340	-	CN
	235/55ZR19	105	W	XL	BSW	8.0	7 1/2J	245	741	340/A/A	925	340	-	CN
	245/35ZR19	93	Y	XL	BSW	8.2	8 1/2J	248	655	340/A/A	650	340	-	CN
	245/40ZR19	98	Y	XL	BSW	8.2	8 1/2J	248	679	340/A/A	750	340	-	CN
	245/40ZRF19	98	Y	XL	BSW	8.2	8 1/2J	248	679	340/A/A	750	340	RFT	CN
	255/35ZR19	96	Y	XL	BSW	8.2	9J	260	661	340/A/A	710	340	-	CN
20	275/30ZR19	96	Y	XL	BSW	8.2	9 1/2J	278	649	340/A/A	710	340	-	CN
	275/35ZR19	96	Y	-	BSW	8.2	9 1/2J	278	675	340/A/A	710	300	-	CN
	275/35ZRF19	100	Y	XL	BSW	8.2	9 1/2J	278	675	340/A/A	800	340	RFT	CN
	225/35ZR20	90	Y	XL	BSW	8.2	8J	230	666	340/A/A	600	340	-	CN
	245/30ZR20	95	W	XL	BSW	8.2	8 1/2J	248	656	340/A/A	690	340	-	CN
	245/35ZR20	95	Y	XL	BSW	8.2	8 1/2J	248	680	340/A/A	690	340	-	CN
	255/35ZR20	97	Y	XL	BSW	8.2	9J	260	686	340/A/A	730	340	-	CN
	275/30ZR20	97	Y	XL	BSW	8.2	9 1/2J	278	674	340/A/A	730	340	-	CN



ULTRA HIGH PERFORMANCE SUV TIRE

ATREZZO

ZSR SUV



PERFORMANCE RATINGS:



DRIVING COMFORT

Groove pattern improves driving stability and works with the optimized variable pitch arrangement to reduce noise emissions.

OVERALL PERFORMANCE

The asymmetric pattern design boasts two strengths; the inner sidewall is adept at draining water to increase wet performance, and outside sidewall with its large tread blocks improves grip while cornering.

HIGH-SPEED PERFORMANCE

Widened tread surface design; when in contact with the ground the specially structured crown evenly distributes force to achieve precise control at high speeds.

FUEL EFFICIENCY

Tread compound effectively improves wet driving capabilities and rolling resistance for improved fuel efficiency.



RIM	SIZE	LI	SR	XL	SIDEWALL	TD (mm)	STANDARD RIM	SW (mm)	OD (mm)	UTQG	MAX LOAD (kg)	PRESSURE (kpa)	PLANT
18	225/55R18	98	V	-	BSW	8.0	7J	233	705	340/A/A	750	300	CN
	235/55R18	100	V	-	BSW	8.0	7 1/2J	245	715	340/A/A	800	300	CN
	235/60R18	107	V	XL	BSW	8.0	7J	240	739	340/A/A	975	340	CN
	255/55R18	109	V	XL	BSW	8.0	8J	265	737	340/A/A	1030	340	CN
	255/60R18	112	V	XL	BSW	8.0	7 1/2J	260	763	340/A/A	1120	340	CN
19	225/40ZR19	93	Y	XL	BSW	8.0	8J	230	663	340/A/A	650	340	CN
	225/45ZR19	96	Y	XL	BSW	8.0	7 1/2J	225	685	340/A/A	710	340	CN
	225/55R19	99	V	-	BSW	8.0	7J	233	731	340/A/A	775	300	CN
	235/45ZR19	99	Y	XL	BSW	7.7	8J	236	695	340/A/A	775	340	CN
	245/45ZR19	102	Y	XL	BSW	8.0	8J	243	703	340/A/A	850	340	CN
	255/50ZR19	107	Y	XL	BSW	8.0	8J	265	739	340/A/A	975	340	CN
	255/55ZR19	111	W	XL	BSW	8.0	8J	265	763	340/A/A	1090	340	CN
	265/50ZR19	110	Y	XL	BSW	8.0	8 1/2J	277	749	340/A/A	1060	340	CN
	275/40ZR19	105	Y	XL	BSW	8.0	9 1/2J	278	703	340/A/A	925	340	CN
	285/45ZR19	111	Y	XL	BSW	8.0	9 1/2J	285	739	340/A/A	1090	340	CN
20	245/45ZR20	103	Y	XL	BSW	8.0	8J	243	728	340/A/A	875	340	CN
	255/45ZR20	105	Y	XL	BSW	8.0	8 1/2J	255	738	340/A/A	925	340	CN
	255/50ZR20	109	Y	XL	BSW	8.0	8J	265	764	340/A/A	1030	340	CN
	255/55ZR20	110	Y	XL	BSW	8.0	8J	265	788	340/A/A	1060	340	CN
	265/45ZR20	108	Y	XL	BSW	8.0	9J	266	746	340/A/A	1000	340	CN
	265/50R20	111	V	XL	BSW	8.0	8 1/2J	277	774	340/A/A	1090	340	CN
	275/40ZR20	106	Y	XL	BSW	7.7	9 1/2J	278	728	340/A/A	950	340	CN
	275/45ZR20	110	Y	XL	BSW	8.0	9J	273	756	340/A/A	1060	340	CN
	275/50ZR20	113	W	XL	BSW	8.0	8 1/2J	284	784	340/A/A	1150	340	CN
	275/55R20	117	V	XL	BSW	8.0	8 1/2J	284	810	340/A/A	1285	340	CN
21	275/60R20	119	V	XL	BSW	8.0	8J	279	838	340/A/A	1360	340	CN
	285/50R20	116	V	XL	BSW	8.0	9J	297	794	340/A/A	1250	340	CN
	315/35ZR20	110	Y	XL	BSW	8.0	11J	320	728	340/A/A	1060	340	CN
	275/45ZR21	110	Y	XL	BSW	7.7	9J	273	781	340/A/A	1060	340	CN
	295/35ZR21	107	Y	XL	BSW	7.7	10 1/2J	301	739	340/A/A	975	340	CN
	295/40ZR21	111	Y	XL	BSW	8.0	10 1/2J	301	769	340/A/A	1090	340	CN
	265/35ZR22	102	Y	XL	BSW	8.0	9 1/2J	271	745	340/A/A	850	340	CN
	275/40ZR22	108	Y	XL	BSW	7.7	9 1/2J	278	779	340/A/A	1000	340	CN
	285/35ZR22	106	Y	XL	BSW	8.0	10J	290	759	340/A/A	950	340	CN
	295/40ZR22	112	Y	XL	BSW	7.7	10 1/2J	301	795	340/A/A	1120	340	CN



ALL-SEASON PERFORMANCE TIRE

INSPIRE



PERFORMANCE RATINGS:



The **INSPIRE** is the ultimate all-season touring tire with balanced levels of premium comfort and advanced performance with a lengthy list of new design features and technology available in 48 popular replacement tire sizes.



ADVANCED RUBBER COMPOUND

Proprietary SertaGrip™ compound increases traction, control and longevity in wet and dry conditions.

ALL-NEW TREAD PATTERN

SilentTread™ pattern uses staggered tuning technology and variable pitch sequence for quiet, comfort and safety.

3D MULTI-SIPE TECHNOLOGY

Expands and expels substances for confident performance that regenerates with tire wear.

RIM	SIZE	LI	SR	XL	SIDEWALL	TD (mm)	STANDARD RIM	SW (mm)	OD (mm)	UTQG	MAX LOAD (kg)	PRESSURE (kpa)	PLANT
14	175/65R14	82	H	-	BSW	7.8	5J	177	584	520/A/A	475	300	CB
	175/70R14	84	T	-	BSW	7.8	5J	177	602	520/A/A	500	300	CB
	185/65R14	86	H	-	BSW	8.0	5 1/2J	189	596	520/A/A	530	300	CB
	195/70R14	91	T	-	BSW	8.0	6J	201	630	520/A/A	615	300	CB
15	175/65R15	84	H	-	BSW	7.8	5J	177	609	520/A/A	500	300	CB
	185/55R15	82	H	-	BSW	8.0	6J	194	585	520/A/A	475	300	CB
	185/60R15	84	H	-	BSW	8.0	5 1/2J	189	603	520/A/A	500	300	CB
	185/65R15	88	H	-	BSW	8.0	5 1/2J	189	621	520/A/A	560	300	CB
	195/55R15	85	V	-	BSW	8.0	6J	201	595	520/A/A	515	300	CB
	195/60R15	88	H	-	BSW	8.0	6J	201	615	520/A/A	560	300	CB
	195/65R15	91	H	-	BSW	8.0	6J	201	635	520/A/A	615	300	CB/CN
	205/65R15	94	H	-	BSW	8.0	6J	209	647	520/A/A	670	300	CB
16	205/70R15	96	T	-	BSW	8.0	6J	209	669	520/A/A	710	300	CB
	215/70R15	98	T	-	BSW	8.2	6 1/2J	221	683	520/A/A	750	300	CB
	195/50R16	84	V	-	BSW	8.0	6J	201	602	520/A/A	500	300	CB
	195/55R16	87	H	-	BSW	8.0	6J	201	620	520/A/A	545	300	CB
	205/50R16	87	V	-	BSW	8.0	6 1/2J	214	612	520/A/A	545	300	CB
	205/55R16	91	V	-	BSW	8.2	6 1/2J	214	632	520/A/A	615	300	CB/CN
	205/60R16	92	V	-	BSW	8.0	6J	209	652	520/A/A	630	300	CB
	205/65R16	95	H	-	BSW	8.0	6J	209	672	520/A/A	690	300	CB/CN
	215/55R16	93	H	-	BSW	8.2	7J	226	642	520/A/A	650	300	CB
	215/60R16	95	V	-	BSW	8.2	6 1/2J	221	664	520/A/A	690	300	CB/CN
	215/65R16	98	T	-	BSW	8.2	6 1/2J	221	686	520/A/A	750	300	CB
	225/55R16	95	H	-	BSW	8.2	7J	233	654	520/A/A	690	300	CB
17	225/60R16	98	H	-	BSW	8.2	6 1/2J	228	676	520/A/A	750	300	CB
	225/65R16	100	T	-	BSW	8.2	6 1/2J	228	698	520/A/A	800	300	CB
	235/60R16	100	V	-	BSW	8.2	7J	240	688	520/A/A	800	300	CB
	235/65R16	103	T	-	BSW	8.2	7J	240	712	520/A/A	875	300	CB
	205/50R17	93	V	XL	BSW	8.0	6 1/2J	214	638	520/A/A	650	340	CB
	215/45R17	87	W	-	BSW	8.2	7J	213	626	520/A/A	545	300	CB/CN
	215/50R17	95	V	XL	BSW	8.2	7J	226	648	520/A/A	690	340	CB
	215/55R17	94	V	-	BSW	8.2	7J	226	668	520/A/A	670	300	CB/CN
	215/60R17	96	T	-	BSW	8.2	6 1/2J	221	690	520/A/A	710	300	CB
	215/65R17	99	T	-	BSW	8.2	6 1/2J	221	712	520/A/A	775	300	CB
	225/45R17	91	V	-	BSW	8.2	7 1/2J	225	634	520/A/A	615	300	CB
	225/50R17	94	V	-	BSW	8.2	7J	233	658	520/A/A	670	300	CB
	225/55R17	97	V	-	BSW	8.2	7J	233	680	520/A/A	730	300	CB/CN
	225/60R17	99	T	-	BSW	8.2	6 1/2J	228	702	520/A/A	775	300	CB
	225/65R17	102	T	-	BSW	8.2	6 1/2J	228	724	520/A/A	850	300	CB
	235/45R17	97	W	XL	BSW	8.2	8J	236	644	520/A/A	730	340	CB
18	235/50R17	96	V	-	BSW	8.2	7 1/2J	245	668	520/A/A	710	300	CB
	235/55R17	99	V	-	BSW	8.2	7 1/2J	245	690	520/A/A	775	300	CB
	245/40R17	91	V	-	BSW	8.2	8 1/2J	248	628	520/A/A	615	300	CB
	245/45R17	99	W	XL	BSW	8.2	8J	243	652	520/A/A	775	340	CB
	225/40R18	92	W	XL	BSW	8.2	8J	230	637	520/A/A	630	340	CB/CN
	225/45R18	95	W	XL	BSW	8.2	7 1/2J	225	659	520/A/A	690	340	CB/CN
	225/55R18	98	V	-	BSW	8.2	7J	233	705	520/A/A	750	300	CB
	225/60R18	100	H	-	BSW	8.2	6 1/2J	228	727	520/A/A	800	300	CB
	235/45R18	94	V	-	BSW	8.2	8J	236	669	520/A/A	670	300	CB
	235/50R18	97	W	-	BSW	8.2	7 1/2J	245	693	520/A/A	730	300	CB
	235/55R18	100	V	-	BSW	8.2	7 1/2J	245	715	520/A/A	800	300	CB
	235/60R18	103	V	-	BSW	8.2	7J	240	739	520/A/A	875	300	CB
19	235/65R18	106	H	-	BSW	8.2	7J	240	763	520/A/A	950	300	CB
	245/40R18	97	W	XL	BSW	8.2	8 1/2J	248	653	520/A/A	730	340	CB
	245/45R18	100	W	XL	BSW	8.2	8J	243	677	520/A/A	800	340	CB/CN
	225/55R19	99	V	-	BSW	8.2	7J	233	731	520/A/A	775	300	CB
	235/40R19	96	V	XL	BSW	8.2	8 1/2J	241	671	520/A/A	710	340	CB
	235/55R19	105	V	XL	BSW	8.2	7 1/2J	245	741	520/A/A	925	340	CB/CN
	245/40R19	98	W	XL	BSW	8.2	8 1/2J	248	679	520/A/A	750	340	CB
	245/45R19	98	W	-	BSW	8.2	8J	243	703	520/A/A	750	300	CB
20	255/60R19	109	H	-	BSW	8.5	7 1/2J	260	789	520/A/A	1030	300	CB
	245/45R20	99	V	-	BSW	8.2	8J	243	728	520/A/A	775	300	CB
	255/45R20	101	V	-	BSW	8.2	8 1/2J	255	738	520/A/A	825	300	CB



TERRAMAX A/T



PERFORMANCE RATINGS:



The **TERRAMAX A/T** is designed to deliver superior traction for SUVs, pickups and vans both off and on road. The A/T provides exceptional handling and on-and-off-road stability while maintaining a comfortable ride.



OFF-ROAD DURABILITY

The tread pattern effectively reduces stone retention and is capable of withstanding punctures from harsh road conditions, effectively protecting the tread from damage.

EXTENDED LIFE

The staggered tread blocks promote even tread wear to increase tire life.

CLAW-LIKE SHOULDER

Domineering claw-like shoulder effectively dissipates heat for improved long-distance, high-speed travel.

SIDEWALL SHIELD

A shield design at the rim protects the tire from collisions impacts, and supports the sidewall.

MOUNTAIN DESIGN

The protruding sidewall mountain design improves sidewall strength and abrasion resistance.



RIM	SIZE	PR	LI	SR	XL	SIDEWALL	TD (mm)	STANDARD RIM	SW (mm)	OD (mm)	UTQG	MAX LOAD (kg)	PRESSURE (kpa)	PLANT
15	215/75R15	-	100	S	-	OWL	10.0	6J	216	703	500/A/B	800	300	CN
	235/70R15	-	103	S	-	OWL	10.5	7J	240	711	500/A/B	875	300	CN
	235/75R15	-	109	S	XL	OWL	10.5	6 1/2J	235	733	500/A/B	1030	340	CN
	265/70R15	-	112	S	-	OWL	10.5	8J	272	753	500/A/B	1120	300	CN
16	235/70R16	-	106	S	-	OWL	10.5	7J	240	736	500/A/B	950	300	CN
	245/70R16	-	107	S	-	OWL	10.5	7J	248	750	500/A/B	975	300	CN
	245/75R16	-	111	S	-	OWL	10.5	7J	248	774	500/A/B	1090	300	CN
	265/70R16	-	112	T	-	OWL	10.5	8J	272	778	500/A/B	1120	300	CN
	265/75R16	-	116	S	-	OWL	10.5	7 1/2J	267	804	500/A/B	1250	300	CN
	275/70R16	-	114	S	-	OWL	10.5	8J	279	792	500/A/B	1180	300	CN
17	235/65R17	-	104	S	-	OWL	10.5	7J	240	738	500/A/B	900	300	CN
	245/65R17	-	107	S	-	OWL	10.5	7J	248	750	500/A/B	975	300	CN
	245/70R17	-	110	T	-	OWL	10.5	7J	248	776	500/A/B	1060	300	CN
	265/65R17	-	112	S	-	OWL	10.5	8J	272	776	500/A/B	1120	300	CN
	265/70R17	-	115	S	-	OWL	10.5	8J	272	804	500/A/B	1215	300	CN
	275/65R17	-	115	S	-	OWL	10.5	8J	279	790	500/A/B	1215	300	CN
18	235/60R18	-	107	T	XL	BSW	10.5	7J	240	739	500/A/A	975	340	CN
	265/60R18	-	110	T	-	BSW	10.5	8J	272	775	500/A/B	1060	300	CN
	265/65R18	-	114	T	-	OWL	10.5	8J	272	801	500/A/B	1180	300	CN
	275/65R18	-	116	T	-	OWL	10.5	8J	279	815	500/A/B	1250	300	CN
20	265/50R20	-	111	T	XL	OWL	10.5	8 1/2J	277	774	500/A/B	1090	340	CN
	275/55R20	-	117	T	XL	BSW	10.5	8 1/2J	284	810	500/A/B	1285	340	CN
	275/60R20	-	115	T	-	BSW	10.5	8J	279	838	500/A/B	1215	300	CN
15	225/75R15C	6PR	110/108	S	-	OWL	12.5	6J	223	719	-	1060/1000	375	CN
	31x10.50R15LT	6PR	109	S	-	OWL	13.0	8 1/2J	268	775	-	1030	350	CN
	LT215/75R15	6PR	100/97	R	-	OWL	12.5	6J	216	703	-	800/730	350	CN
	LT235/75R15	6PR	104/101	R	-	OWL	13.0	6 1/2J	235	733	-	900/825	350	CN
16	205R16C	8PR	110/108	Q	-	OWL	12.5	6J	208	736	-	1060/1000	450	CN
	LT225/75R16	10PR	115/112	S	-	BSW	13.0	6J	223	744	-	1215/1120	550	CN
	LT235/85R16	10PR	120/116	R	-	BSW	13.0	6 1/2J	235	806	-	1380/1260	550	CN
	LT245/70R16	8PR	113/110	S	-	OWL	13.0	7J	248	750	-	1150/1060	450	CN
	LT245/75R16	10PR	120/116	S	-	OWL	13.0	7J	248	774	-	1380/1260	550	CN
	LT265/75R16	10PR	123/120	S	-	OWL	13.0	7 1/2J	267	804	-	1550/1400	550	CN
	LT285/75R16	10PR	126/123	R	-	OWL	13.0	8J	286	834	-	1700/1550	550	CN
	LT235/80R17	10PR	120/117	R	-	OWL	13.0	6 1/2J	235	808	-	1400/1285	550	CN
	LT245/70R17	10PR	119/116	S	-	OWL	13.0	7J	248	776	-	1360/1250	550	CN
	LT245/75R17	10PR	121/118	S	-	OWL	13.0	7J	248	800	-	1450/1320	550	CN
17	LT265/70R17	10PR	121/118	S	-	OWL	13.0	8J	272	804	-	1450/1320	550	CN
	LT285/70R17	10PR	121/118	R	-	OWL	13.0	8 1/2J	292	832	-	1450/1320	550	CN
	LT265/70R18	10PR	124/121	R	-	BSW	13.0	8J	272	829	-	1600/1450	550	CN
	LT275/65R18	10PR	123/120	R	-	OWL	13.0	8J	279	815	-	1550/1400	550	CN
	LT275/70R18	10PR	125/122	R	-	OWL	13.0	8J	279	843	-	1650/1500	550	CN
	LT285/60R18	8PR	118/115	S	-	OWL	13.0	8 1/2J	292	799	-	1320/1215	450	CN
	LT305/65R18	10PR	124/121	S	-	OWL	13.0	9J	311	853	-	1600/1450	450	CN
	LT325/60R18	10PR	124/121	S	-	OWL	13.0	9 1/2J	331	847	-	1600/1450	450	CN
	LT265/60R20	10PR	121/118	R	-	BSW	13.0	8J	272	826	-	1450/1320	550	CN
	LT275/55R20	10PR	120/117	S	-	OWL	13.0	8 1/2J	284	810	-	1400/1285	550	CN
20	LT275/60R20	10PR	123/120	R	-	BSW	13.0	8J	279	838	-	1550/1400	550	CN
	LT275/65R20	10PR	126/123	R	-	BSW	13.0	8J	279	866	-	1700/1550	550	CN
	LT305/55R20	10PR	121/118	R	-	BSW	13.0	9 1/2J	316	844	-	1450/1320	450	CN
	LT325/60R20	10PR	126/123	R	-	OWL	13.0	9 1/2J	331	898	-	1700/1550	450	CN



ALL-TERRAIN LIGHT TRUCK & SUV TIRE

TERRAMAX AT-M



PERFORMANCE RATINGS:



RIM	SIZE	PR	LI	SR	XL	SIDEWALL	TD (mm)	STANDARD RIM	SW (mm)	OD (mm)	UTQG	MAX LOAD (kg)	PRESSURE (kpa)	PLANT
15	31x10.50R15LT	6PR	109	S	-	OWL	13.0	8 1/2J	268	775	-	1030	350	VN
	245/70R16	-	107	S	-	OWL	10.5	7J	248	750	500/A/B	975	300	VN
16	265/70R16	-	112	T	-	OWL	10.5	8J	272	778	500/A/B	1120	300	VN
	265/65R17	-	112	S	-	OWL	10.5	8J	272	776	500/A/B	1120	300	VN
18	265/60R18	-	110	T	-	RWL	10.5	8J	272	775	500/A/B	1060	300	VN
20	265/50R20	-	111	T	XL	RWL	10.5	8 1/2J	277	774	500/A/B	1090	340	VN
	275/55R20	-	117	T	XL	RWL	10.5	8 1/2J	284	810	500/A/B	1285	340	VN



TRACTION PERFORMANCE

Widened running surface ensures superior traction performance in all types of road surfaces.

OFF-ROAD CLIMBING

Tread blocks maintain a staggered bite to improve traction and climbing ability.

OFF-ROAD GRIP

Widened shoulder grooves and nodules within the tread grooves effectively eject mud, sand, gravel, and other debris to improve grip.



OFF-ROAD DURABILITY

Lengthened tread shoulder employs a multi-layered protruding design that improves strength and prevents damage to the carcass, allowing for a safe off-roading experience.



TERRAMAX M/T



PERFORMANCE RATINGS:



OFF-ROAD PERFORMANCE

The z-shaped grooves between blocks is designed to enhance off-road driving capabilities by improving grip and climbing ability.

OFF-ROAD GRIP

Deepened grooves allows mud to easily be discharged from the tread at both high and low speeds. The design also offers better grip when traveling on rocky or rugged roads.

OFF-ROAD STABILITY

Large blocks on the shoulder vastly enhance handling on muddy and rock roads.

OFF-ROAD DURABILITY

The shield pattern which extends from the sidewall protects the sidewall from abrasions and increase traction on mud roads. The carcass is designed with three layers of polyester fabric to make it rugged and resistant to strong impacts.



RIM	SIZE	PR	LI	SR	SIDEWALL	TD (mm)	STANDARD RIM	SW (mm)	OD (mm)	MAX LOAD (kg)	PRESSURE (kpa)	PLANT
15	30×9.50R15LT	6PR	104	Q	OWL	15.3	7 1/2J	240	756	900	350	CN
	31×10.50R15LT	6PR	109	Q	OWL	15.3	8 1/2J	268	781	1030	350	CN
	33×12.50R15LT	6PR	108	Q	OWL	15.3	10J	318	832	1000	250	CN
	35×12.50R15LT	6PR	113	Q	OWL	15.3	10J	318	883	1150	250	CN
	LT235/75R15	6PR	104/101	Q	OWL	15.3	6 1/2J	235	739	900/825	350	CN
16	LT235/85R16	10PR	120/116	Q	OWL	15.3	6 1/2J	235	812	1380/1260	550	CN
	LT245/75R16	10PR	120/116	Q	OWL	15.3	7J	248	780	1380/1260	550	CN
	LT265/70R16	10PR	121/118	Q	OWL	15.3	8J	272	773	1450/1320	550	CN
	LT265/75R16	10PR	123/120	Q	OWL	15.3	7 1/2J	267	810	1550/1400	550	CN
17	33×12.50R17LT	8PR	114	Q	OWL	16.3	10J	318	832	1180	350	CN
	35×12.50R17LT	10PR	121	Q	OWL	16.3	10J	318	883	1450	450	CN
	LT265/65R17	10PR	120/117	Q	OWL	15.3	8J	272	776	1400/1285	550	CN
	LT265/70R17	10PR	121/118	Q	OWL	15.5	8J	272	810	1450/1320	550	CN
	LT285/70R17	10PR	121/118	Q	OWL	15.5	8 1/2J	292	838	1450/1320	550	CN
18	33×12.50R18LT	10PR	118	Q	BSW	16.3	10J	318	832	1320	450	CN
	35×12.50R18LT	10PR	123	Q	BSW	16.7	10J	318	883	1550	450	CN
	LT265/65R18	8PR	117/114	Q	OWL	15.3	8J	272	801	1285/1180	450	CN
20	33×12.50R20LT	10PR	114	Q	BSW	16.3	10J	318	832	1180	450	CN
	35×12.50R20LT	10PR	121	Q	BSW	16.3	10J	318	883	1450	450	CN
	LT305/55R20	10PR	121/118	Q	BSW	16.3	9 1/2J	316	850	1450/1320	450	CN